



Virtualization.  
Consolidation.  
Simplification.  
**Choice.**

## SecureShore™ Network Management System



### BENEFITS

SecureShore Network Management System is a comprehensive multi-element system, perfect for multi-box configuration, operating system backup and restore, reporting, application distribution, and event scheduling.



SecureShore Network Management System (NMS) provides full configuration, management, and monitoring support for all Crossbeam® Next Generation Security Platforms. Deep feature configuration support and multiple automation options make SecureShore NMS the right fit for the enterprise with five devices or the provider with hundreds.

#### **Simple, Intuitive User Interface**

The browser-based SecureShore NMS interface uses cascading folders and nested windows to provide a quick overview of all monitored devices. A color code next to each device folder indicates the overall health status. Open folders with a simple click and drill down for full security switch information. Role-based access allows the administrator to grant access based on tiered organizational responsibilities.



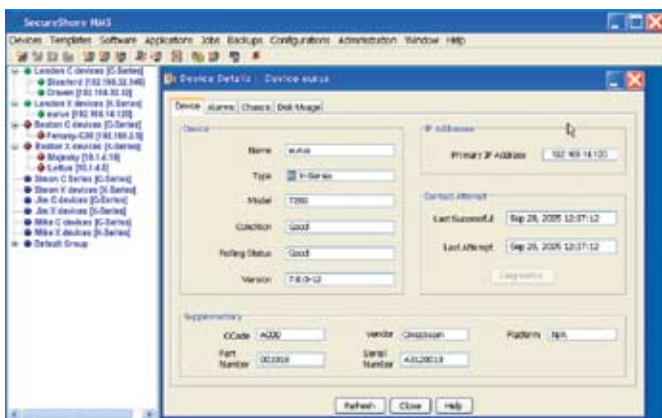
## Graphical User Interface

Using client/server architecture, SecureShore NMS provides fast, secure local and remote management access. The browser-based SecureShore client can be loaded onto any desktop system, while the SecureShore server can run on Linux, C2, or C6 platforms.

The graphical user interface (GUI) is fast, loads instantly, and is easy to use. Help is provided for all dialog boxes and pages, and includes a standard Windows-based search tool. The GUI is split between two panes: one for grouped devices and another for dialog box tools. For enhanced flexibility, the user can observe different boxes for multiple devices. Windows can be resized and tiled for device-by-device comparison. Right-click mouse options provide instant access to the tools for individual devices or named groups of devices. The tools can also be selected through quick click graphic buttons or from the menu list.

## Device Grouping and Management

SecureShore NMS allows Crossbeam platforms to be gathered into logical groups, enabling actions to be



*Details polled from the selected device. Information tabs include alarms, chassis configuration, and disk usage.*

performed on multiple devices simultaneously.

Once a group is created, SecureShore NMS periodically polls the device, collecting relevant information, status, and alarms. The top level device view displays a color-based device alarm status – red, green, orange, or blue – to indicate the appropriate status level. This display rolls up to the group level for easy monitoring. To obtain full status information, simply select the device and interrogate it.

## Pre-defined Templates

SecureShore NMS contains several pre-defined device templates to aid in changing or updating parameters such as SNMP or DNS information across multiple devices. To change one of these parameters, simply select the appropriate template, update the parameter, and push it to all identified groups or devices. This feature significantly reduces the time typically required to perform this function.

## Flexible, Multi-device Backup and Restore

SecureShore NMS has powerful backup and restore capabilities, allowing groups of devices to be backed up simultaneously and their configuration and system files stored in the database. For added system flexibility, user-defined files and directories can be added to any backup, permitting application-specific data to also be backed up. Backup jobs can be scheduled on a recurring basis (e.g., daily, weekly, etc.).

In the event of system failure, SecureShore NMS can restore a known configuration to the device. Once imported, a backup can be compared to the current state of the device. This is useful when determining configuration changes.



## Leading-edge Partners

### **Application, XOS™ Software, and COS Maintenance**

Using SecureShore NMS is the best way to maintain device operating systems and applications across a range of Crossbeam devices.

SecureShore NMS displays a simple view of all Crossbeam platform operating systems and the pre-installed application releases. SecureShore NMS can schedule updates to any device or device group, and can either copy the software to the device or copy and initiate the upgrade. Currently, only COS and XOS software upgrades can be initiated.

### **Asset Management**

SecureShore NMS asset reports capture all Crossbeam device and module information, including serial numbers, in an exportable comma delimited file – providing complete Crossbeam inventory at the touch of a button.

### **Job Scheduling**

Certain tasks can be scheduled to occur at a pre-determined time and others to occur as soon as they are actioned. SecureShore NMS maintains a list of jobs with current status, allowing the user to monitor the progress and mark when a job has finished. The list view displays start and end time for the job, the administrator user who started the job, and the type of job. A more detailed list for troubleshooting is also available within the log archive for each job.

### **Tiered Role-based Administration**

SecureShore NMS controls user logins through a set of roles and groups. The master administrator account has full system access and can create a flexible suite of sub-admins. Administration access can be limited by device, group, and distinct SecureShore NMS features. For example, it may be desirable to limit management access to a particular set of security switches or to setup an account with back-up privileges only.

### **Complementary Management**

SecureShore NMS complements the Crossbeam product element management systems (EMS) and command line interface (CLI), and the existing policy management systems from market-leading Crossbeam



## About Crossbeam Systems®

Crossbeam Systems, Inc. transforms the way enterprises, service providers and government agencies architect and deliver security services. The basis of Crossbeam's solution is its Next Generation Security Platform, a highly scalable hardware platform that facilitates the consolidation, virtualization and simplification of security services delivery, while preserving the customers' choice of best-of-breed security applications. Crossbeam offers the only security platform that delivers unparalleled network performance, scalability, adaptability and resiliency. Customers choose Crossbeam to intelligently manage risk, accelerate and maintain compliance, and protect their businesses from evolving threats. Crossbeam is headquartered in Boxborough, Mass., and has offices in Europe and Asia Pacific. More information is available at: [www.crossbeam.com](http://www.crossbeam.com).

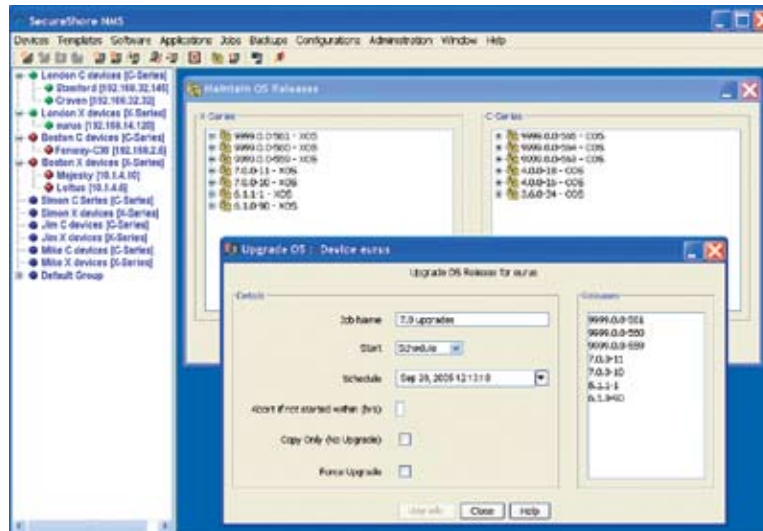


### Corporate Headquarters

Crossbeam Systems, Inc.  
80 Central Street  
Boxborough, MA 01719  
Tel: +1 (978) 318 7500  
Fax: +1 (978) 287 4210  
[www.crossbeam.com](http://www.crossbeam.com)

partners such as Check Point SmartCenter, Sourcefire Defense Center, Trend Micro Control Manager, Websense Management, etc.

Additionally, SecureShore NMS can engage with both multi-vendor NMS and high-level managers like HP Openview and IBM Tivoli. With SNMP support, SecureShore provides alarm information, stores and collects log files, and acts as a conduit to direct device management.



The administrator selects an operating system from the releases list and schedules the upgrade.

## System Specifications

Server	Crossbeam C2 or C6 devices running COS 4.1 CS-LINUX_V3 or PC server running Linux RH EL 3 with Postgres 7.3 or higher RDMS (client and server packages); 1GB disk space or higher
Client	PC with Java Runtime Environment (JRE) V1.5 or later
Supported Operating Systems	C-Series devices running COS version 3.6.0 or later X-Series devices running XOS version 6.1.1 or later

Crossbeam, Crossbeam Systems, any logos associated therewith are trademarks or registered trademarks of Crossbeam Systems, Inc., in the U.S. Patent and Trademark Office, and several international jurisdictions. All other company, product or service names not owned by Crossbeam mentioned in this document are the property of their respective owners. Copyright © 2008 Crossbeam Systems, Inc. All Rights Reserved.

DS\_SS\_050908